

Floor Expansion Joint Covers

i845[®]



Product Guide



Description

The i845[®] is a floor expansion joint system is designed for uneven slab construction.

Key Features

- **Install Condition:** Floor/Floor, Floor/Wall.
- **Joint width:** 25-100mm.
- Optional fire rated.
- Seamlessly integrates with coordinating Wall system.
- Anti-slip surface serrations.
- Applicable for existing conditions, additions and new construction .
- Mill finish aluminum.

Materials

Aluminum: Alloy types of 6061-T6, 6063-T6, 6005A, or 5052-H32 sheet goods.



Application Instructions

Installation: Joint systems: Install in accordance with manufacturer's instructions.

Align work plumb, level and flush with adjacent surfaces. Mechanically anchor to substrate. Allowances should be made where actual structural gap at time of installation varies from nominal design gap. No shimming of frames is permitted. Coordinate with work of other Sections.

If concrete blockouts (rebates) are required, ensure continuous support equal to surrounding substrate structural values.

Fire Rated Assemblies: Where required, install to manufacturer's instructions.

Moisture Barrier: Where required, install to manufacturer's instructions.

i845[®]

Protect: the completed Expansion Control system work from damage during construction. Damage protection includes surface abrasion and overloading of coverplate by materials handling equipment and construction waste/debris. Protection from environmental factors required throughout installation process until Project Closeout. Protection includes but is not limited to rain events, moisture protection, exposure to temperature fluctuations or direct sunlight for temperature sensitive product offerings.

Store

Store components in original containers in a clean, dry location. Ensure temperature or moisture sensitive components are stored in a tempered location.

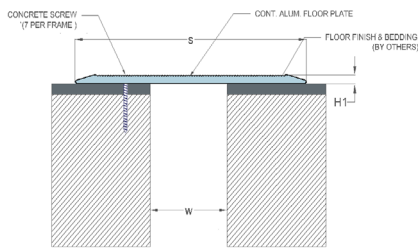
Contractor to provide temporary protective covers on all installed finished surfaces. Protection is required to guard against both surface abrasions as well as overloading of horizontal deck components by construction traffic .

Movement ± 25%

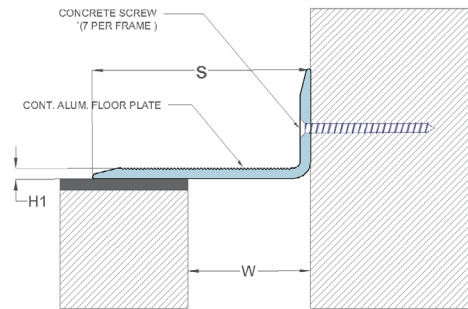
| Application | System | W | H1 | H2 | S | B | Movement +/- | | L |
|-------------|------------|-------------|----------------|----------|-----------|----------|--------------|----------|------|
| | | Joint Width | Frame Height 1 | Height 2 | Sightline | Blockout | Horizontal | Vertical | Load |
| | | mm | mm | mm | mm | mm | mm | mm | Kn |
| Floor/Floor | i845-25 | 25 | 5 | * | 150 | * | 13 | * | 50 |
| | i845-50 | 50 | 5 | * | 150 | * | 19 | * | 50 |
| | i845-75 | 75 | 6 | * | 250 | * | 25 | * | 50 |
| | i845-100 | 100 | 6 | * | 250 | * | 51 | * | 50 |
| Floor/Wall | i845-C-25 | 25 | 5 | * | 100 | * | 13 | * | 50 |
| | i845-C-50 | 50 | 5 | * | 100 | * | 19 | * | 50 |
| | i845-C-75 | 75 | 5 | * | 175 | * | 25 | * | 50 |
| | i845-C-100 | 100 | 5 | * | 175 | * | 51 | * | 50 |

i845[®]

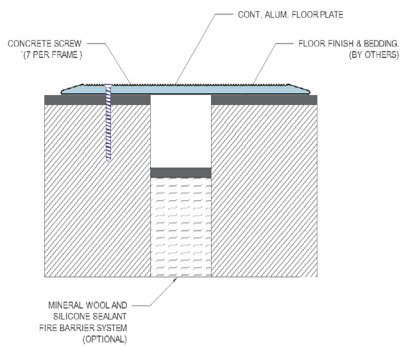
Series i845 - Floor to Floor



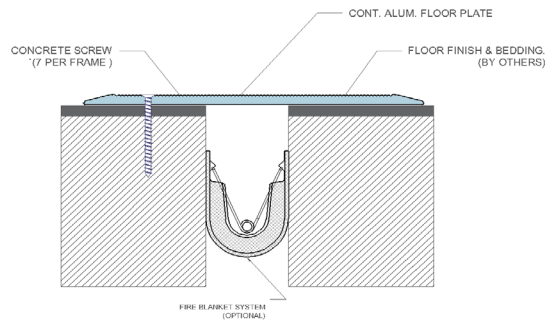
Series i845 C - Floor to Wall



Series i845 - Mineral Wool & Sealant Fire Barrier Options



Series i845 - FireStop S30 Options



Technical Data Sheet - January 2024, Version 1.1.5

