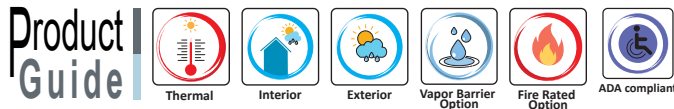


Floor and Wall Systems

i831[®]



Description

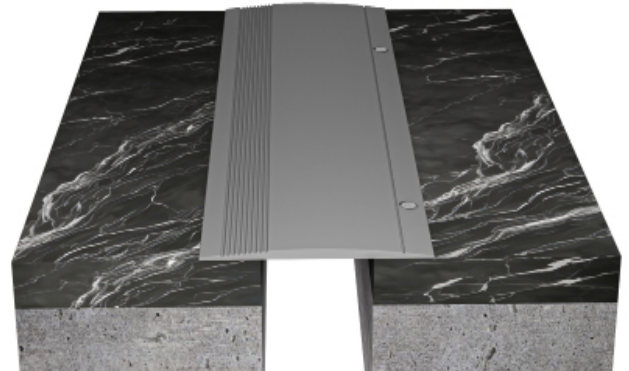
The **i831[®]** a System is a Designed for interior and exterior floor and wall.

Key Features

- **Install Condition:** Floor/Floor, Floor/Wall .
- **Joint width:** 25-75mm.
- Optional fire rated.
- Seamlessly integrates with coordinating Wall system.
- Flush mount interior and exterior systems reduce sightline.
- Adaptable to many finishes, including ceramic tile, marble, stone .
- Clear anodized finish.

Materials

Aluminum: Alloy types of 6061-T6, 6063-T6, 6005A, or 5052-H32 sheet goods.



Application Instructions

Installation: Joint systems: Install in accordance with manufacturer's instructions.

Align work plumb, level and flush with adjacent surfaces. Mechanically anchor to substrate. Allowances should be made where actual structural gap at time of installation varies from nominal design gap. No shimming of frames is permitted. Coordinate with work of other Sections.

If concrete blockouts (rebates) are required, ensure continuous support equal to surrounding substrate structural values.

Fire Rated Assemblies: Where required, install to manufacturer's instructions.

Moisture Barrier: Where required, install to manufacturer's instructions.

i831[®]

Protect: the completed Expansion Control system work from damage during construction. Damage protection includes surface abrasion and overloading of coverplate by materials handling equipment and construction waste/debris. Protection from environmental factors required throughout installation process until Project Closeout. Protection includes but is not limited to rain events, moisture protection, exposure to temperature fluctuations or direct sunlight for temperature sensitive product offerings.

Store

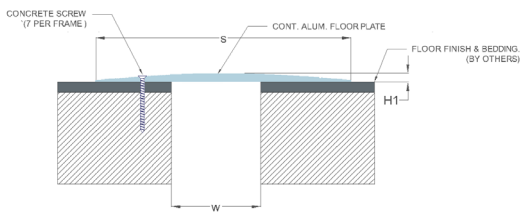
Store components in original containers in a clean, dry location. Ensure temperature or moisture sensitive components are stored in a tempered location.

Contractor to provide temporary protective covers on all installed finished surfaces. Protection is required to guard against both surface abrasions as well as overloading of horizontal deck components by construction traffic .

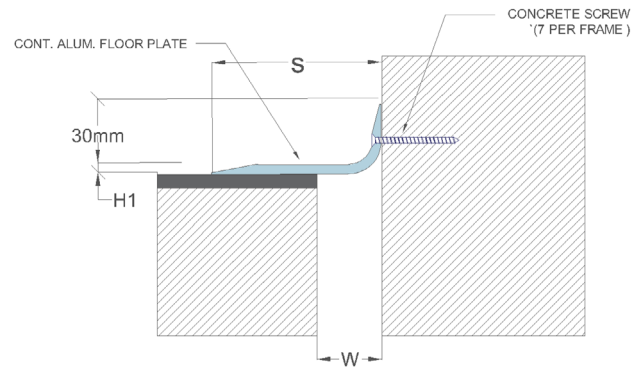
Movement ± 25%

Application	System	W	H1	H2	S	B	Movement +/-		L
		Joint Width	Frame Height 1	Height 2	Sightline	Blockout	Horizontal	Vertical	Load
		mm	mm	mm	mm	mm	mm	mm	Kn
Floor/Floor	i831-25	25	5	*	60	*	13	*	75
	i831-38	38	5	*	80	*	19	*	75
	i831-50	50	5	*	145	*	38	*	75
	i831-75	75	5	*	160	*	40	*	75
Floor/Wall	i831-C-25	25	5	*	50	*	13	*	75
	i831-C-38	38	5	*	70	*	19	*	75
	i831-C-50	50	5	*	110	*	38	*	75
	i831-C-75	75	5	*	135	*	40	*	100

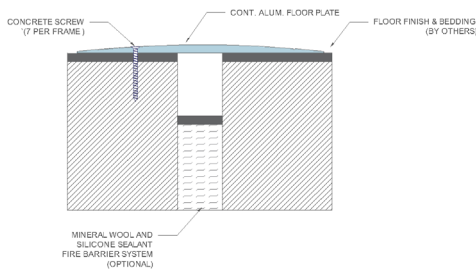
Series i831 - Floor to Floor



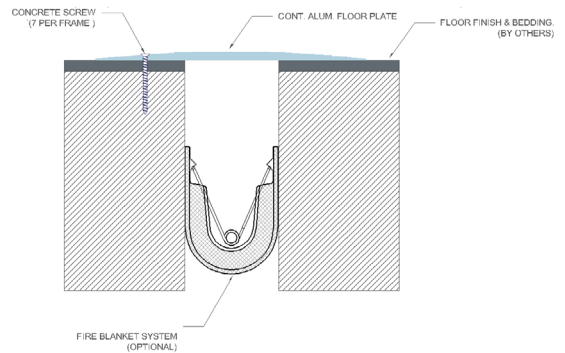
Series i831 C - Floor to Wall



Series i831 - Mineral Wool & Sealant Fire Barrier Options



Series i831 - FireStop S30 Options



Technical Data Sheet - January 2024, Version 1.1.5

