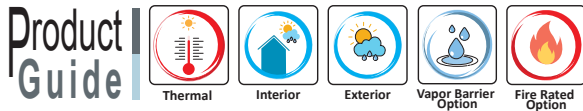


Wall to Wall or Ceiling to Ceiling  
Wall to Corner or Wall to Ceiling

## Wall and Ceiling Systems

# i821<sup>®</sup>



### Description

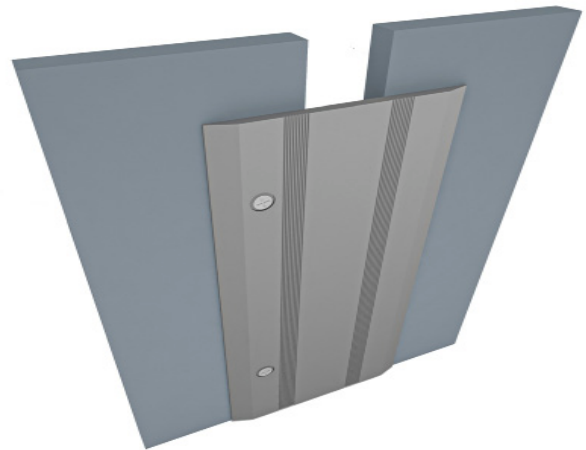
The i821<sup>®</sup> System is a Designed for interior and exterior walls and ceilings.

### Key Features

- **Install Condition:** Wall/Wall, Ceiling/Ceiling.
- **Joint width:** 25-100mm.
- Seamlessly integrates with coordinating floor system.
- Optional fire rated.
- Designed for interior walls and ceilings.
- Unique ratcheted design accommodates uneven or odd angle wall conditions .
- Economical solution for retrofit and surface mount installations .
- Flush mount interior and exterior systems reduce sightline.
- Adaptable to many finishes, including ceramic tile, marble, stone .
- Clear anodized finish.

### Materials

**Aluminum:** Alloy types of 6061-T6, 6063-T6, 6005A, or 5052-H32 sheet goods.



### Application Instructions

**Installation:** Joint systems: Install in accordance with manufacturer's instructions.

Align work plumb, level and flush with adjacent surfaces. Mechanically anchor to substrate. Allowances should be made where actual structural gap at time of installation varies from nominal design gap. No shimming of frames is permitted. Coordinate with work of other Sections.

If concrete blockouts (rebates) are required, ensure continuous support equal to surrounding substrate structural values.

Fire Rated Assemblies: Where required, install to manufacturer's instructions.

**Moisture Barrier:** Where required, install to manufacturer's instructions.

## Wall and Ceiling Systems

# i821<sup>®</sup>



**Protect:** the completed Expansion Control system work from damage during construction. Damage protection includes surface abrasion and overloading of coverplate by materials handling equipment and construction waste/debris. Protection from environmental factors required throughout installation process until Project Closeout. Protection includes but is not limited to rain events, moisture protection, exposure to temperature fluctuations or direct sunlight for temperature sensitive product offerings.

### Store

Store components in original containers in a clean, dry location. Ensure temperature or moisture sensitive components are stored in a tempered location.

Contractor to provide temporary protective covers on all installed finished surfaces. Protection is required to guard against both surface abrasions as well as overloading of horizontal deck components by construction traffic .

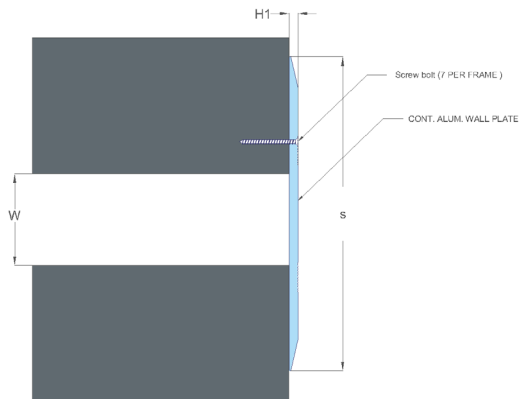
### Movement ± 25%

Application	System	W	H1	H2	S	B	Movement +/-		L
		Joint Width	Frame Height 1	Height 2	Sightline	Blockout	Horizontal	Vertical	Load
		mm	mm	mm	mm	mm	mm	mm	Kn
Wall/Wall Ceiling/ Ceiling	i821-25	25	3	*	60	*	13	*	*
	i821-50	50	3	*	100	*	25	*	*
	i821-75	75	3	*	160	*	40	*	*
	i821-100	100	3	*	200	*	50	*	*
Wall/Corner Wall/Ceiling	i821-C-25	25	3	*	50	*	13	*	*
	i821-C-50	50	3	*	70	*	17	*	*
	i821-C-75	75	3	*	115	*	28	*	*
	i821-C-100	100	3	*	135	*	35	*	*

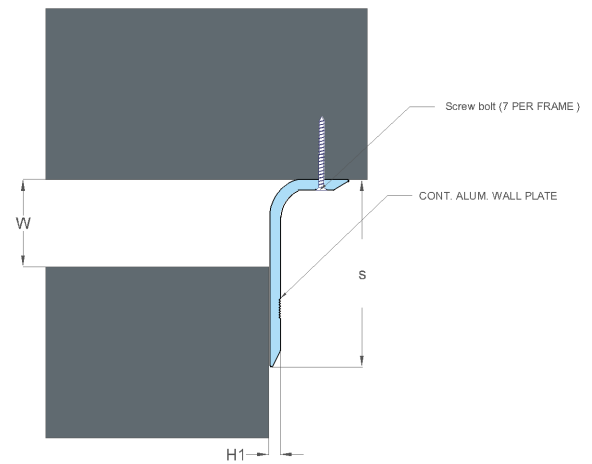
## Wall and Ceiling Systems

# i821<sup>®</sup>

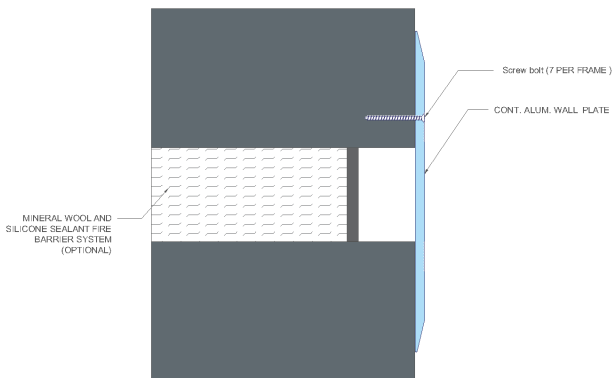
### Series i821



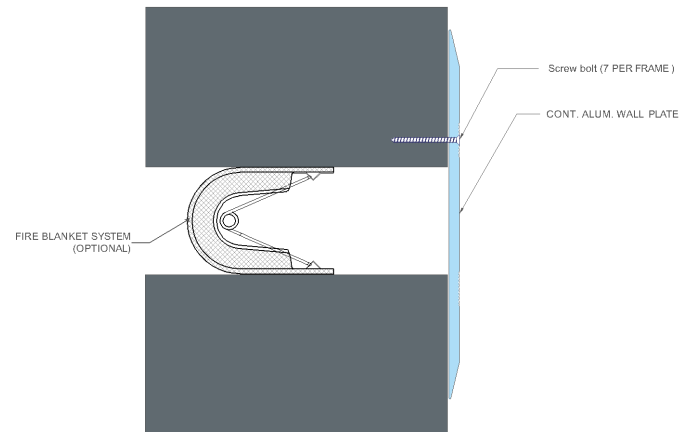
### Series i821 C



### Series i821 - Mineral Wool & Sealant Fire Barrier Options



### Series i821 - FireStop S30 Options



Technical Data Sheet - January 2024, Version 1.1.5

