

i345[®]



Description

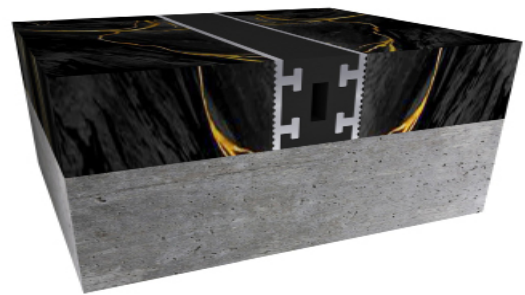
The **i345[®]** a System is a Floor Aluminum Movement Joint used for the expansion gap between floors.

Key Features

- **Install Condition:** Floor/Floor.
- **Joint width:** 10-20mm.
- Recessed modular frames for minimal sight line.
- Dual durometer seal provides secure fit and optimal flexibility.
- Adaptable to many finishes, including ceramic tile, marble, stone, terrazzo and resin.
- Snap-fit design for easy on site assembly.
- Easy to clean flush seals.
- No dirt or water traps.
- Mill finish aluminum.
- available in several colors: Beige-Black-Grey-White



- **Load Capability:** Standard.



Application Instructions

Installation: Joint systems: Install in accordance with manufacturer's instructions.

Align work plumb, level and flush with adjacent surfaces. Mechanically anchor to substrate. Allowances should be made where actual structural gap at time of installation varies from nominal design gap. No shimming of frames is permitted. Coordinate with work of other Sections.

If concrete blockouts (rebates) are required, ensure continuous support equal to surrounding substrate structural values.

Materials

- **Aluminum:** Alloy types of 6061-T6, 6063-T6, 6005A, or 5052-H32 sheet goods.
- **Rubber:** PVC - shore A \geq 70

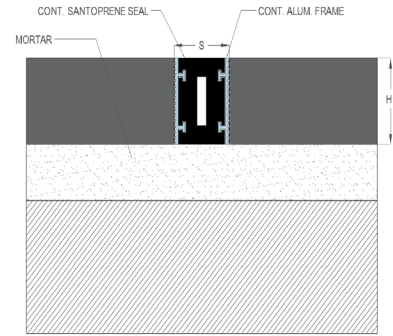
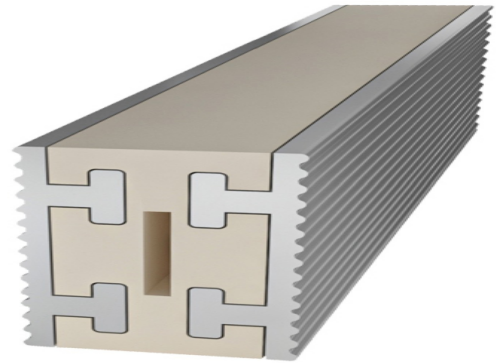
i345[®]

Protect: the completed Expansion Control system work from damage during construction. Damage protection includes surface abrasion and overloading of coverplate by materials handling equipment and construction waste/debris. Protection from environmental factors required throughout installation process until Project Closeout. Protection includes but is not limited to rain events, moisture protection, exposure to temperature fluctuations or direct sunlight for temperature sensitive product offerings.

Store

Store components in original containers in a clean, dry location. Ensure temperature or moisture sensitive components are stored in a tempered location.

Contractor to provide temporary protective covers on all installed finished surfaces. Protection is required to guard against both surface abrasions as well as overloading of horizontal deck components by construction traffic .



Movement ± 25%

System	W	H1	H2	S	B	Movement +/-	
	Joint Width	Frame Height 1	Height 2	Sightline	Blockout	Horizontal	Vertical
	mm	mm	mm	mm	mm	mm	mm
i345-10H20	10	20	*	10	*	2.5	2.5
i345-15H20	15	20	*	15	*	3.75	3.75
i345-20H20	20	20	*	20	*	5	5
i345-10H40	10	40	*	10	*	2.5	2.5
i345-15H40	15	40	*	15	*	3.75	3.75
i345-20H40	20	40	*	20	*	5	5

