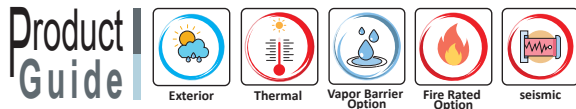


Roof Expansion Joint System

i120[®]



Description

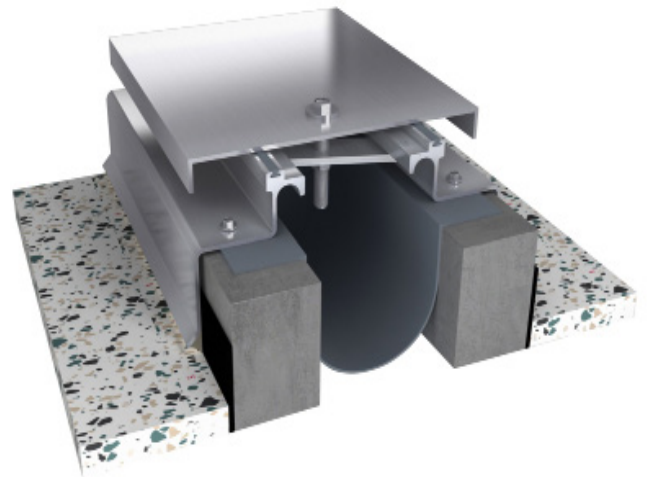
The **i120** roof expansion joint system accommodates multi-directional seismic movement and is installed with a 2x up stand mount.

Key Features

- **Install Condition:** Roof/Roof, Roof/Wall .
- **Joint width:** 50-350mm.
- Optional fire rated.
- Seamlessly integrates with coordinating Wall system.
 - Applicable for existing conditions, additions and new construction .
- Mill finish aluminum.

Materials

Aluminum: Alloy types of 6061-T6, 6063-T6, 6005A, or 5052-H32 sheet goods.



Application Instructions

Installation: Joint systems: Install in accordance with manufacturer's instructions.

Align work plumb, level and flush with adjacent surfaces. Mechanically anchor to substrate. Allowances should be made where actual structural gap at time of installation varies from nominal design gap. No shimming of frames is permitted. Coordinate with work of other Sections.

If concrete blockouts (rebates) are required, ensure continuous support equal to surrounding substrate structural values.

Fire Rated Assemblies: Where required, install to manufacturer's instructions.

Moisture Barrier: Where required, install to manufacturer's instructions.

Roof Expansion Joint System

i120[®]



Protect: the completed Expansion Control system work from damage during construction. Damage protection includes surface abrasion and overloading of coverplate by materials handling equipment and construction waste/debris. Protection from environmental factors required throughout installation process until Project Closeout. Protection includes but is not limited to rain events, moisture protection, exposure to temperature fluctuations or direct sunlight for temperature sensitive product offerings.

Store

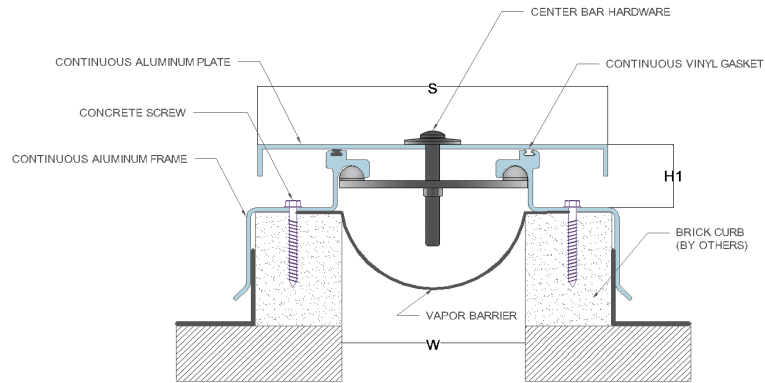
Store components in original containers in a clean, dry location. Ensure temperature or moisture sensitive components are stored in a tempered location.

Contractor to provide temporary protective covers on all installed finished surfaces. Protection is required to guard against both surface abrasions as well as overloading of horizontal deck components by construction traffic .

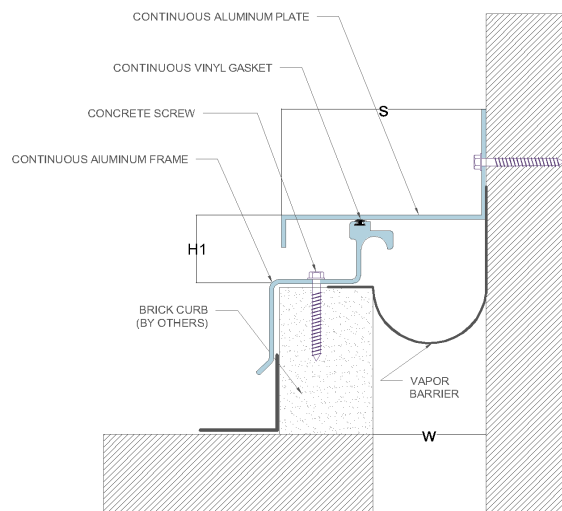
Movement ± 50%

Application	System	W	H1	H2	S	Movement +/-		L
		Joint Width	Frame Height 1	Height 2	Sightline	Horizontal	Vertical	Load
		mm	mm	mm	mm	mm	mm	Kn
Roof to Roof	i120-50	50	32	*	130	25	25	30
	i120-75	75	32	*	160	38	38	30
	i120-100	100	32	*	185	50	50	30
	i120-150	150	32	*	265	75	75	30
	i120-200	200	32	*	345	100	100	30
	i120-250	250	32	*	420	125	125	30
	i120-300	300	32	*	495	150	150	30
	i120-350	350	32	*	570	175	175	30
Roof to Wall	i120-C-50	50	32	*	95	25	25	30
	i120-C-75	75	32	*	125	38	38	30
	i120-C-100	100	32	*	165	50	50	30
	i120-C-150	150	32	*	240	75	75	30
	i120-C-200	200	32	*	320	100	100	30
	i120-C-250	250	32	*	395	125	125	30
	i120-C-300	300	32	*	470	150	150	30
	i120-C-350	350	32	*	545	175	175	30

Series i120 - Roof to Roof



Series i120 C - Roof to Wall



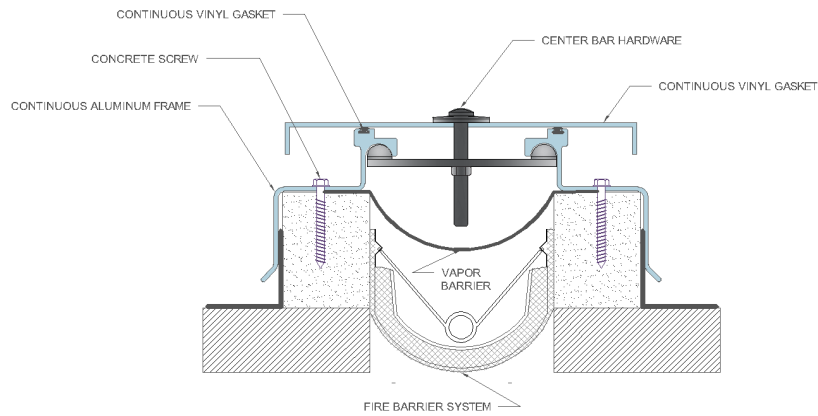
Roof to Roof
Roof to Wall

Roof Expansion Joint System

i120[®]



Series i120- FireStop S30 Options



Technical Data Sheet - January 2024, Version 1.1.5

Office : 22 El-Shaheed Mohamed Abd
El-Hadi Street, Nasr City, Cairo
Website : www.iChemEg.com
Email : info@iChemEg.com

