

# iFlex PVC®

## Description

The **iFlex PVC®** is a non reinforced liner on base of plasticized polyvinylchloride PVC, type T according to Standard EN 13967. **iFlex PVC®** is produced by extrusion of the selected secondary raw materials of PVC without other polymer materials.

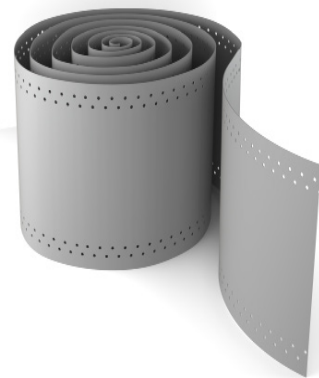
## Key Features

- Excellent adhesion to many materials.
- Weather and water resistant.
- UV resistant.
- Available with normal and rapid hardening grades of adhesive.
- Root resistant.
- Good resistance to many chemicals.
- Versatile system suitable for many difficult situations.
- Extremely flexible.

## Uses

Sealing system for expansion, construction and connection joints in:

- Joints with extreme movement.
- Water retaining structures and drinking water reservoirs.
- Hydro electric power plants.
- Sewage treatment plants.
- Basements.
- Swimming pools.



## Application Instructions

**Surface Preparation:** Ensure that surfaces to be sealed are clean, dry, sound and free from frost. Age of concrete 4-6 weeks depending on environmental conditions. Clean all joints of release agents, water repellents, laitance, dust, dirt, old sealants and other contaminants which could impair adhesion. Nonporous surfaces should be cleaned and degreased by wiping with a suitable solvent such as **iSolv S40®** Universal Cleaner on an oil and lintfree cloth before application of sealant. Porous substrates should be mechanically cleaned using a steel brush, sanding disc or any similar means.

**Note:** When using any solvent, always provide adequate ventilation. Avoid heat, sparks and open flames. Use solvent resistant gloves. Observe and follow all precautions listed on solvent container label.

**Installation:** Measure and cut to exact length needed for continuous length, being careful not to pull or stretch the membrane. Make sure that both deck edge surfaces are properly levelled. High spots shall be cut and low spots shall be filled in. Do not install if the joint's anticipated movement will exceed the system's movement range. Minimize splice points by installing membrane in longest possible continuous lengths.

Do not allow any of the components to freeze prior to installation. Store all **EpoMortar SF®** out of direct sunlight in a dry location. Periodically inspect the applied material and repair localized areas as needed.

# iFlex PVC<sup>®</sup>

Consult an iChemEG representative for additional information. Proper application is the responsibility of the user. Field visits by iChemEG personnel are for the purpose of making technical recommendations only and not for supervising or providing quality control on the jobsite.

**Mixing EpoMortar SF<sup>®</sup>:** Mix parts A+B together for at least 2 minutes with a mixing spindle attached to a slow speed electric drill (max. 500 rpm) until the material becomes smooth in consistency.

Avoid aeration while mixing. Then, pour the whole mix into a clean container and stir again for approx.

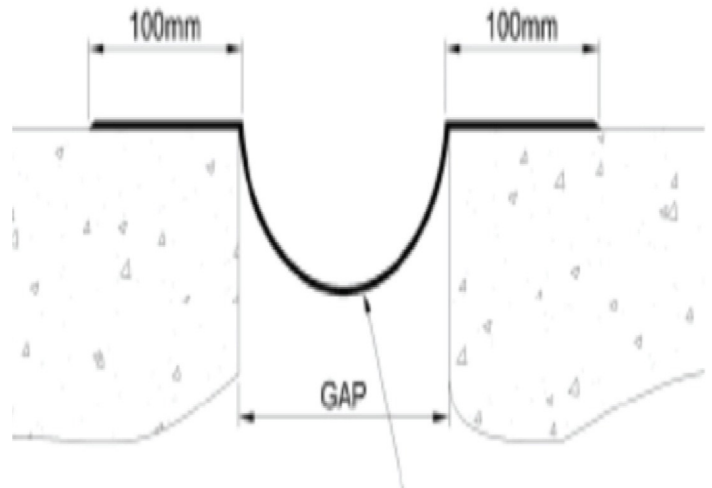
1 more minute at low speed to keep air entrapment at a minimum. Mix only that quantity which can be used within its potlife.

**Selection of iFlex PVC<sup>®</sup> tape size:** Selection of the correct tape size (width) and of a suitable iChemEG adhesive depends on the expected performance. If necessary, ask for technical advice. For higher movement, place and fix tape in a loop into the joint.

Apply a suitable thoroughly mixed **EpoMortar SF<sup>®</sup>** adhesive on both sides of the joint / crack into the prepared substrate, using a suitable trowel. If the concrete substrate is damp, force the adhesive well into the substrate. Layer thickness of adhesive should be 2 mm and the width on each side at 100 mm.

Apply the **EpoMortar SF<sup>®</sup>** tape within the open time of the adhesive. Press the tape firmly and without trapping air into the adhesive by using a suitable roller. The adhesive should be squeezed out on both sides of the tape by ~ 6 mm.

**Protect:** The iFlex PVC<sup>®</sup> Tape must be protected from mechanical damage.



## Packaging

**Available in :** Rolls of 20 m

**Thickness :** 1.5 mm

**Width :** 20, 25, 32 cm

## Shelf Life

Shelf life is up to 36 months when stored as per recommendations.

## Store

Store components in original containers in a clean, dry location. Ensure temperature or moisture sensitive components are stored in a tempered location. The recommended storage temperature is from -5 °C to +30 °C.

Contractor to provide temporary protective covers on all installed finished surfaces. Protection is required to guard against both surface abrasions as well as overloading of horizontal deck components by construction traffic .




وزارة البحث العلمي والتكنولوجيا  
معهد بحوث البترول المصري  
Egyptian Petroleum Research Institute (EPRI)  
مركز حماية الأسطح المعدنية spc

ISO 17025, 14001, 19001, 9001

## تقرير فني لعينة مطاط ( iChemEG ) الخاص بشركة

تاريخ : 2023/7/19

العينة: قطاع من شريط مطاطي لونه رمادي من مادة (iFlex PVC)

السادة شركة ( iChemEG )

لقد تمت الاختبارات لقطاع من شريط مطاطي لونه رمادي من مادة (iFlex PVC) طبقا للمواصفات القياسية العالمية وقد سجلت النتائج في الجدول التالي

Test type	Results	Reference value	Standard	Remake
Tensile strength	11.67 N/mm <sup>2</sup>	≥ 10 N/mm <sup>2</sup>	DIN 53455	Accept
Tear strength	13.54 N/mm	≥ 12 N/mm	DIN 53507 A	Accept
Shore A Hardness	91	90 ± 5	DIN 53505	Accept
Elongation at Break	320 %	> 300 %	DIN 53455	Accept

الخلاصة : العينة اجتازت الاختبارات السابقة بنجاح طبقا للمواصفات القياسية العالمية

استشاري المركز  
أ.د. أسامة أبو العنين



مدير مركز حماية الأسطح  
أ.د. أشرف السيد

1, Ahmed EL-Zomor St, Nasr City, Cairo, Egypt. Tel : (+202)22242742-22242712 Fax(+202)22242433 P.O: 11727  
 (11222) الرقم البريدي: 202(22242433) فاكس: 202(22242742-22242712) هاتفون: 202(22242742-22242712) E-mail: ashrafelsaid@yahoo.com  
 www.epri-eg mobil 01009798493 ,tel (022) 26707521

