

## Wall and Ceiling Systems

# i870<sup>®</sup>

ichem<sup>®</sup>  
building solutions

### Product Guide



### Description

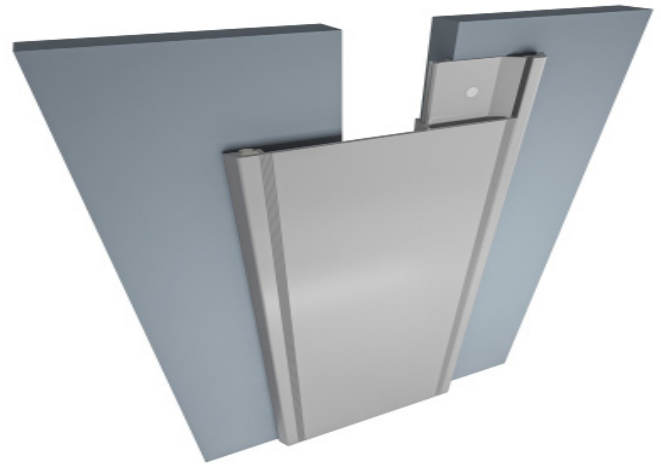
The **i870<sup>®</sup>** wall + ceiling expansion joint system is a surface mount design making it a great solution for retrofit projects.

### Key Features

- **Install Condition:** Wall/Wall, Ceiling/Ceiling .
- **Joint width:** 25-100mm.
- Optional fire rated.
- Designed for interior walls and ceilings.
- Unique ratcheted design accommodates uneven or odd angle wall conditions .
- Snap-fit cover plate design hides the fasteners and allows for quick on-site assembly .
- Economical solution for retrofit and surface mount installations .

### Materials

**Aluminum:** Alloy types of 6061-T6, 6063-T6, 6005A, or 5052-H32 sheet goods.



### Application Instructions

**Installation:** Joint systems: Install in accordance with manufacturer's instructions.

Align work plumb, level and flush with adjacent surfaces. Mechanically anchor to substrate. Allowances should be made where actual structural gap at time of installation varies from nominal design gap. No shimming of frames is permitted. Coordinate with work of other Sections.

If concrete blockouts (rebates) are required, ensure continuous support equal to surrounding substrate structural values.

**Fire Rated Assemblies:** Where required, install to manufacturer's instructions.

**Moisture Barrier:** Where required, install to manufacturer's instructions.

## Wall and Ceiling Systems

# i870<sup>®</sup>

**Protect:** the completed Expansion Control system work from damage during construction. Damage protection includes surface abrasion and overloading of coverplate by materials handling equipment and construction waste/debris. Protection from environmental factors required throughout installation process until Project Closeout.

### Store

Store components in original containers in a clean, dry location. Ensure temperature or moisture sensitive components are stored in a tempered location.

Contractor to provide temporary protective covers on all installed finished surfaces. Protection is required to guard against both surface abrasions as well as overloading of horizontal deck components by construction traffic .

### Movement ± 50%

Application	System	W	H1	H2	S	B	Movement +/-		L
		Joint Width	Frame Height 1	Height 2	Sightline	Blockout	Horizontal	Vertical	Load
		mm	mm	mm	mm	mm	mm	mm	Kn
Wall/Wall Ceiling/ Ceiling	i870-25	25	9	*	79	*	13	*	*
	i870-50	50	9	*	118	*	25	*	*
	i870-75	75	9	*	156	*	38	*	*
	i870-100	100	9	*	194	*	50	*	*
Wall/Corner Wall/Ceiling	i870-C-25	25	9	*	44	*	13	*	*
	i870-C-50	50	9	*	83	*	25	*	*
	i870-C-75	75	9	*	121	*	38	*	*
	i870-C-100	100	9	*	159	*	50	*	*

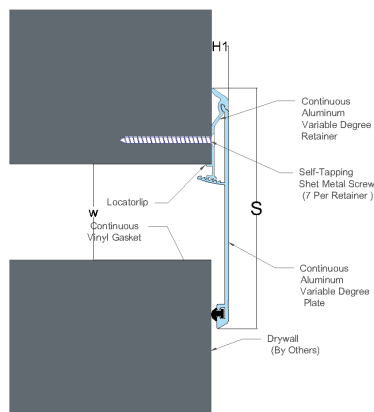
Wall to Wall or Ceiling to Ceiling  
Wall to Corner or Wall to Ceiling

## Wall and Ceiling Systems

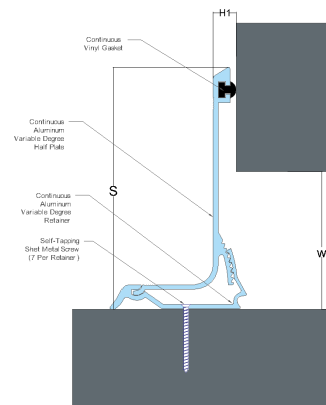
# i870<sup>®</sup>

ichem<sup>®</sup>  
building solutions

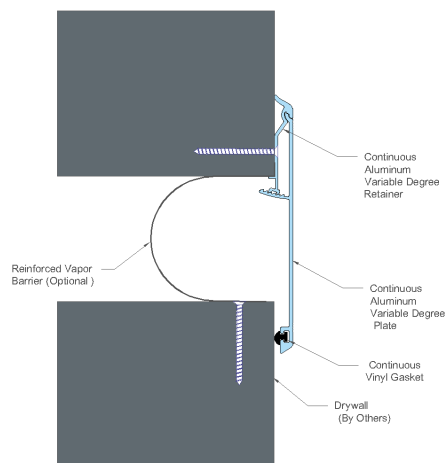
### Series i870 - Wall to Wall or Ceiling to Ceiling



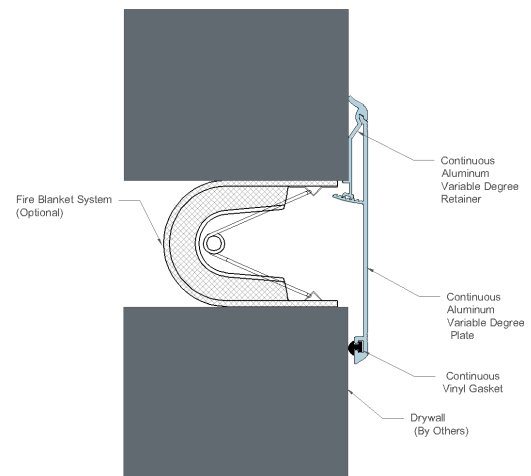
### Series i870 C - Wall to Corner



### Series i870 - iFlex PVC Options



### Series i870 - FireStop S30 Options



Product Data Sheet - January 2025, Version 1.2.2

