

## Product Guide



Thermal



Interior



Exterior



Vapor Barrier Option



Fire Rated Option



ADA compliant

### Description

The i890<sup>®</sup> a System is a Designed for interior and exterior floor, wall And Ceiling.

### Key Features

- **Install Condition:** floor, wall And Ceiling systems.
- **Joint width:** 25-150mm.
- Optional fire rated.
- Flush mount interior and exterior systems reduce sightline.
- Adaptable to many finishes, including ceramic tile, marble, stone.
- The product is available in all PVD coating colors.

### Materials

**Stainless steel:** Alloy types of 304 or 316.

**Thickness :** 0.8 & 1.3 & 1.8 & 2.3 & 2.8



### Application Instructions

**Installation:** Joint systems: Install in accordance with manufacturer's instructions.

Align work plumb, level and flush with adjacent surfaces. Mechanically anchor to substrate. Allowances should be made where actual structural gap at time of installation varies from nominal design gap. No shimming of frames is permitted. Coordinate with work of other Sections.

If concrete blockouts (rebates) are required, ensure continuous support equal to surrounding substrate structural values.

**Fire Rated Assemblies:** Where required, install to manufacturer's instructions.

**Moisture Barrier:** Where required, install to manufacturer's instructions.

**Protect:** the completed Expansion Control system work from damage during construction. Damage protection includes surface abrasion and overloading of coverplate by materials handling equipment and construction waste/debris. Protection from environmental factors required throughout installation process until Project Closeout. Protection includes but is not limited to rain events, moisture protection, exposure to temperature fluctuations or direct sunlight for temperature sensitive product offerings.

## Store

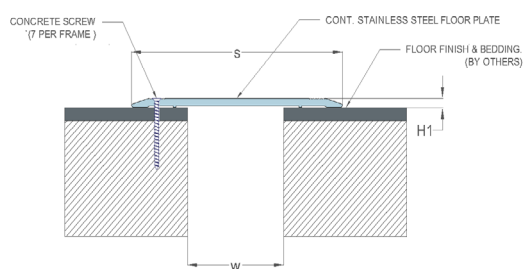
Store components in original containers in a clean, dry location. Ensure temperature or moisture sensitive components are stored in a tempered location.

Contractor to provide temporary protective covers on all installed finished surfaces. Protection is required to guard against both surface abrasions as well as overloading of horizontal deck components by construction traffic.

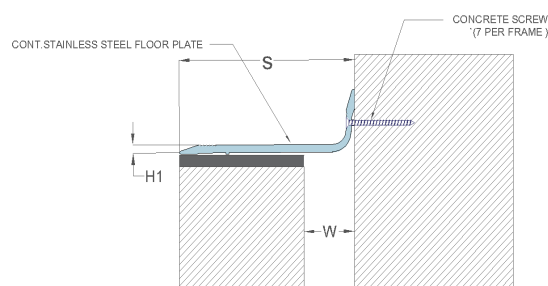
## Movement ± 25%

| Application               | System     | W           | H1             | H2       | S         | B        | Movement +/- |          |
|---------------------------|------------|-------------|----------------|----------|-----------|----------|--------------|----------|
|                           |            | Joint Width | Frame Height 1 | Height 2 | Sightline | Blockout | Horizontal   | Vertical |
|                           |            | mm          | mm             | mm       | mm        | mm       | mm           | mm       |
| Floor/Floor<br>Wall/Wall  | i890-25    | 25          | *              | *        | 60        | *        | 13           | *        |
|                           | i890-38    | 38          | *              | *        | 80        | *        | 19           | *        |
|                           | i890-50    | 50          | *              | *        | 110       | *        | 25           | *        |
|                           | i890-75    | 75          | *              | *        | 200       | *        | 38           | *        |
|                           | i890-100   | 100         | *              | *        | 200       | *        | 50           | *        |
|                           | i890-125   | 125         | *              | *        | 250       | *        | 65           | *        |
|                           | i890-150   | 150         | *              | *        | 250       | *        | 75           | *        |
| Floor/Wall<br>Wall/Corner | i890-C-25  | 25          | *              | *        | 50        | *        | 13           | *        |
|                           | i890-C-38  | 38          | *              | *        | 70        | *        | 19           | *        |
|                           | i890-C-50  | 50          | *              | *        | 80        | *        | 25           | *        |
|                           | i890-C-75  | 75          | *              | *        | 150       | *        | 38           | *        |
|                           | i890-C-100 | 100         | *              | *        | 150       | *        | 50           | *        |
|                           | i890-C-125 | 125         | *              | *        | 220       | *        | 65           | *        |
|                           | i890-C-150 | 150         | *              | *        | 220       | *        | 75           | *        |

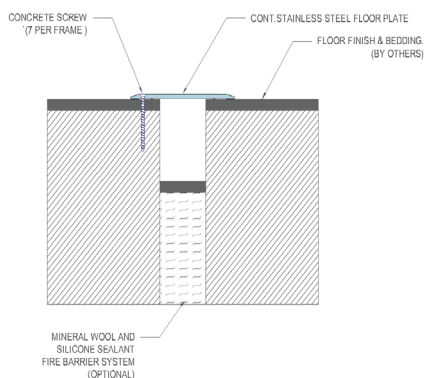
## Series i890



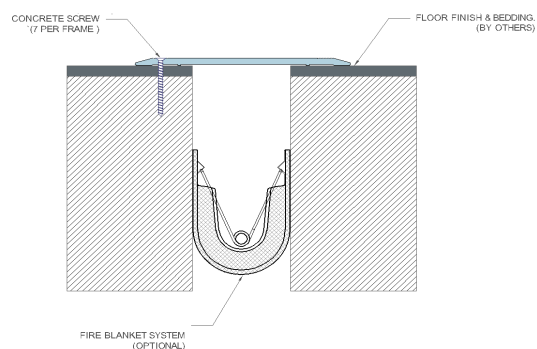
## Series i890-C



## Series i890 - Mineral Wool & Sealant Fire Barrier Options



## Series i890 - FireStop S30 Options



Technical Data Sheet - January 2025, Version 1.2.2

